

Toronto Parking Authority

TABIA-CoT Interdepartmental Meeting- 20/06/2017

# On-Street Parking Program 2017 Review Proposed Changes

BIA Consultation Phase II



# Proposed Changes- Objectives

- **Simplify** the hourly on-street rate structure that currently exists.
- Form **contiguous hourly rate areas** throughout the City of Toronto.
- Update the hourly rate structure to align it with **other comparable cities** based on the analysis outlined below.
- Adjust for **inflation**, as needed.
- Parking is **fair and consistent for all similar business areas** across the City of Toronto, and
- Effectively respond to **parking usage** and turnover demands.

# Recommendation 1

In summary, the following on-street parking changes are being recommended:

Approve the following **hourly on-street rate structure** in effect for on-street parking, with the appropriate geographical boundaries for each hourly rate throughout the City of Toronto (as seen in Map 1).

Hourly On-Street Rates	
Current	Proposed 2017
\$4.00	\$5.00
\$3.00	\$4.00
\$2.25	\$3.00
\$2.00	\$2.00
\$1.50	\$1.00
\$1.00	

# Recommendation 2

Approve changes to the **hours of operation** for paid parking for select parts of the City of Toronto, such that paid parking is in effect **Monday to Sunday and ends at 9:00.p.m.** The proposed areas are outlined in Map 2.

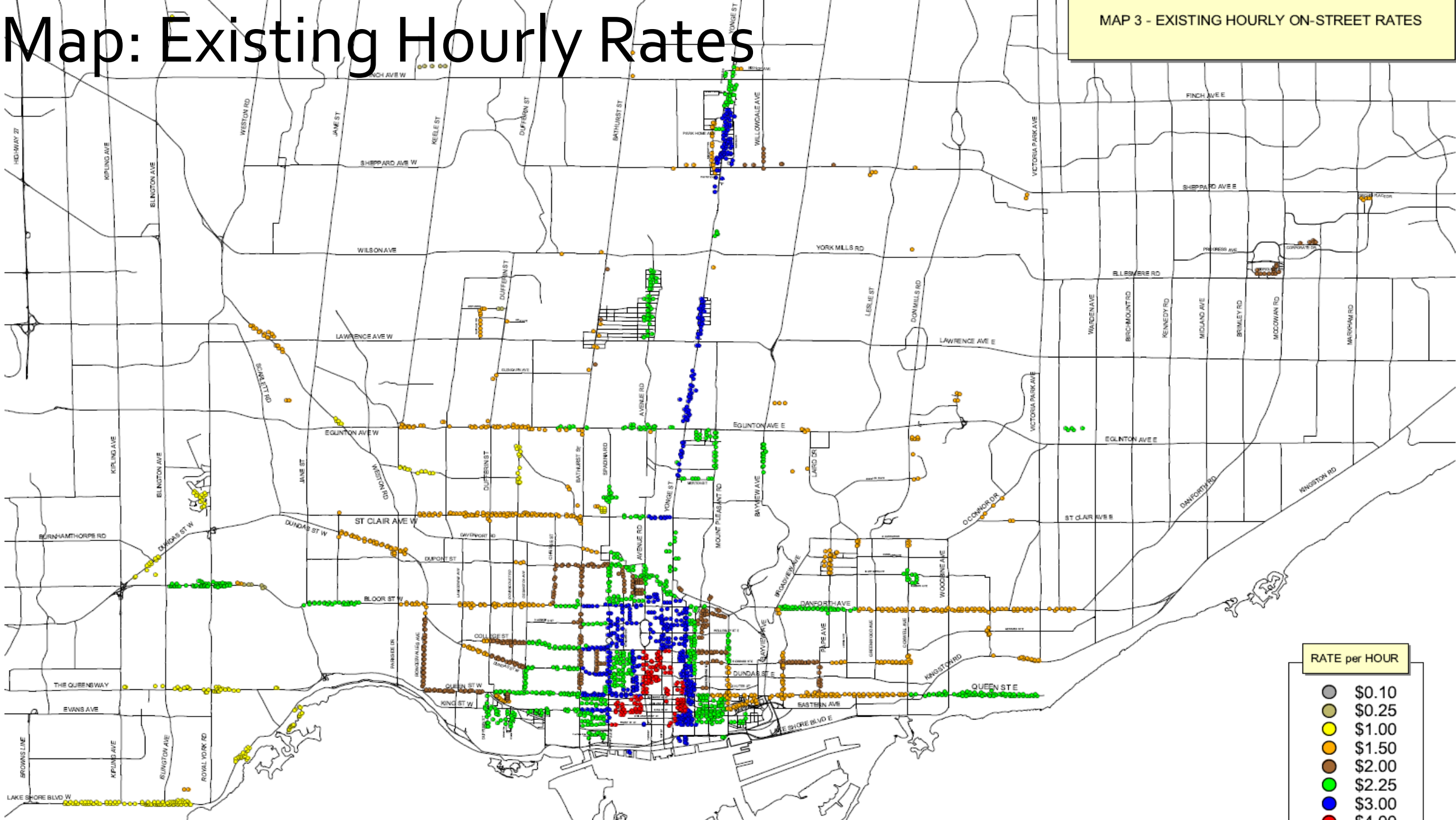
# Background

- The On-Street Review of **2007**
- The On-Street Review of **2012**
- The On-Street Rate Review of **2015**

<u>Hourly Rate Structure</u>				
1999-2004	2004-2007	2007-2012	2012-Present	Proposed
	\$3.00	\$3.50	\$4.00	<b>\$5.00</b>
<b>\$2.00</b>	\$2.00	\$2.50	\$3.00	<b>\$4.00</b>
<b>\$1.50</b>	\$1.50	\$2.00	\$2.25	<b>\$3.00</b>
<b>\$1.00</b>	\$1.00	\$1.50	\$2.00	<b>\$2.00</b>
		\$1.00	\$1.50	<b>\$1.00</b>
			\$1.00	

# Map: Existing Hourly Rates

MAP 3 - EXISTING HOURLY ON-STREET RATES



RATE per HOUR

- Grey circle: \$0.10
- Light Green circle: \$0.25
- Yellow circle: \$1.00
- Orange circle: \$1.50
- Brown circle: \$2.00
- Light Green circle: \$2.25
- Blue circle: \$3.00
- Red circle: \$4.00

# Influencing Factors

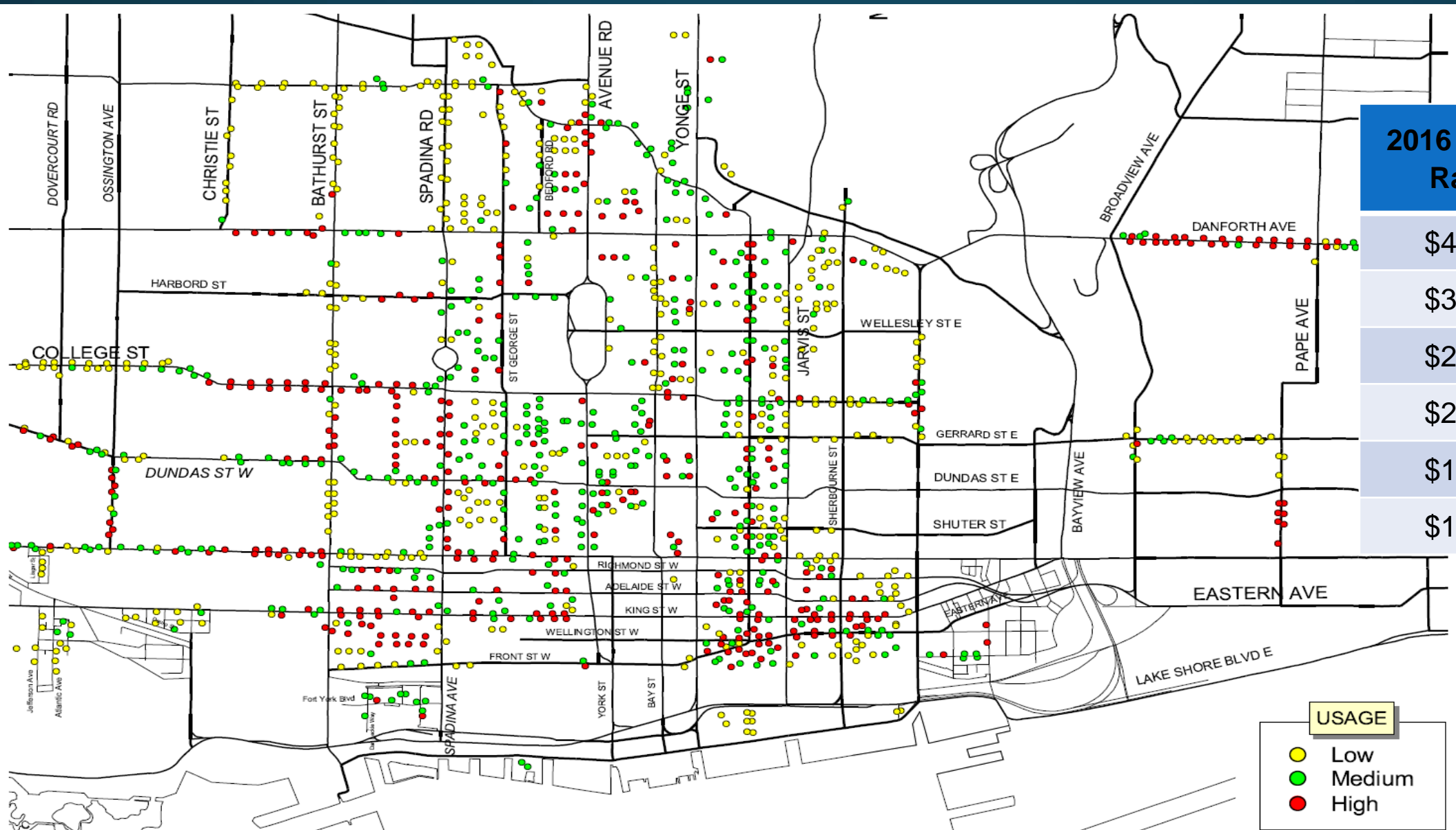
1. 2016 Parking Usage
2. Consumer Price Index (CPI) and Cost Pressures
3. TTC & GO Transit Fares
4. Other Comparative Canadian and U.S. Cities\*
5. Current Value Assessment (CVA)\* for robust local economic growth areas

\*With adopted Recommendation Analysis for Item EX20.24

# Results of Analysis



# 1. 2016 Usage Review



2016 Hourly Rate	Change %
\$4.00	3.82%
\$3.00	5.41%
\$2.25	1.27%
\$2.00	3.39%
\$1.50	5.01%
\$1.00	9.31%

## 2. Consumer Price Index

The Toronto Consumer Price Index (CPI) has increased approximately 7.6% since the previous change in the hourly prices in 2012, which was the last time the hourly rate structure was adjusted for inflation for select hourly rates.

The **current hourly rate of \$1.50 was last adjusted in 2007.**

Toronto Consumer Price Index (CPI) has increased approximately 18.6% since then.

Year	Index
2007	110.5
2008	113.1
2009	113.6
2010	116.5
2011	120.0
2012	121.8
2013	123.3
2014	126.4
2015	128.3
2016	131.0

# 3. TTC & GO Transit Fares

Year	Rates	
	Ticket/Token	Metropass
2007	\$2.25	\$109.00
2010	\$2.50	\$121.00
2012	\$2.60	\$126.00
2013	\$2.65	\$128.50
2014	\$2.70	\$133.75
2015	\$2.80	\$141.50
2016	\$3.00	\$141.50
2017	\$3.25	\$146.25
	Change %	
	Ticket/Token	Metropass
2007-2017	44.4%	34.2%
2012-2017	25.0%	16.0%

According to Metrolinx, the price of GO transit fares has increased by about **21.1%** while the cost to drive has increased approximately **7.4%** from 2014-2015 to 2015-2016\*.

# 4. Other Canadian & U.S. Cities

City	Low Rate (per hour)	High Rate (per hour)
<b>Canada</b>		
Vancouver	<b>\$1.00</b>	<b>\$6.00</b>
Calgary	<b>\$0.50</b>	<b>\$5.00</b>
Ottawa	<b>\$1.50</b>	<b>\$3.00</b>
Montreal	<b>\$1.00</b>	<b>\$3.00</b>
<b>United States***(\$USD)</b>		
New York City	<b>\$1.00</b>	<b>\$5.00*</b>
Boston**	<b>\$1.00</b>	<b>\$3.75</b>
Los Angeles	<b>\$0.50</b>	<b>\$6.00</b>
Chicago	<b>\$2.00</b>	<b>\$6.50</b>

\*\$5.00 at peak time; \$3.50 at other times.

\*\*includes the Performance Parking Pilot

\*\*\*All rates from the United States are quoted in USD.

<http://council.vancouver.ca/20161116/documents/cfsc6.pdf>.  
 [2017]. [Interactive map illustrating Calgary's on-street usage and rate zones by day of week and time] *On-Street Occupancy*. Retrieved from <https://www.calgaryparking.com/findparking/onstreet>.  
 P.Zatoun (Parking Systems Engineer, City of Ottawa), personal communication (e-mail), March 2, 2017.  
 [2017]. [Interactive map illustrating Montreal's rate zones on a map] *Paid On-Street Parking*. Retrieved from <http://www.stadmtl.qc.ca/en/parking/paid-on-street-parking.html>.  
 City of New York. (2017). *Street Parking Rates*. Retrieved from <http://www.nyc.gov/html/doh/html/motorists/parking-rates.shtml>.  
 City of Boston. (2016). *How Do Parking Meters Work?* Retrieved from <https://www.boston.gov/departments/parking-clerk/how-do-parking-meters-work>.  
 LA Express Park. (2016). *Downtown LA Express Park Rate Changes April 4, 2016*. Retrieved from <http://www.laexpresspark.org/downtown-la-express-park-rate-changes-april-4-2016/>.  
 ParkChicago. (2017). *Rates & Fees*. Retrieved from <https://parkchicago.com/fees>.

# 5. CVA & Robust Local Areas

Current Value Assessment (CVA) is defined as the amount of money a property would realize if sold at arm's length by a willing seller to a willing buyer.

1. Average CVA rate for change (from 2012 to 2016) for non-residential properties was determined to be **41%** amongst the 82 business areas.
2. **38 business areas** identified as having a CVA rate of change greater than **41%**.
3. **Inconsistencies** were identified.
4. Examined **adjacent areas** of on-street paid parking, to ensure consistent regulations for the general area.

# Proposed Changes

# Proposed Changes- Objectives

- **Simplify** the hourly on-street rate structure that currently exists.
- Form **contiguous hourly rate areas** throughout the City of Toronto.
- Update the hourly rate structure to align it with **other comparable cities** based on the analysis outlined below.
- Adjust for **inflation**, as needed.
- Parking is **fair and consistent for all similar business areas** across the City of Toronto, and
- Effectively respond to **parking usage** and turnover demands.

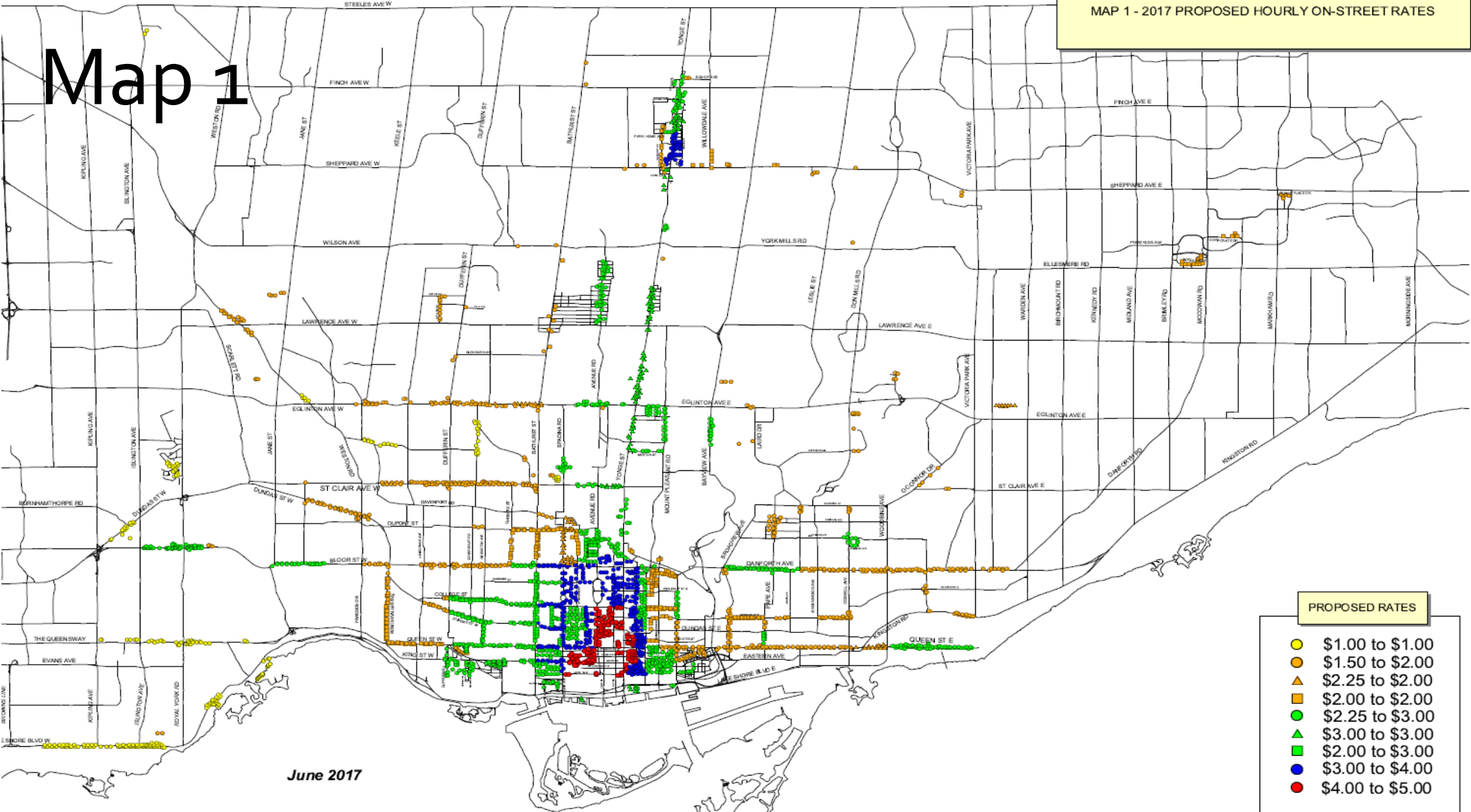
# Hourly Rate Changes

Current Rate	Existing Space Count*	From	To	Impacted Spaces		Proposed Hourly Rate	Proposed Space Count
\$4.00	928	\$4.00	\$5.00	928		\$5.00	928
\$3.00	3456	\$3.00	\$4.00	2825		\$4.00	2828
		\$3.00	\$3.00	631		\$3.00	6933
\$2.25	5993	\$2.25	\$3.00	5510		\$2.00	6538
		\$2.25	\$2.00	480		\$1.00	1503
\$2.00	2449	\$2.00	\$3.00	792			
		\$2.00	\$2.00	1657			
\$1.50	4401	\$1.50	\$2.00	4401			
\$1.00	1503	\$1.00	\$1.00	1503			



# Map 1

MAP 1 - 2017 PROPOSED HOURLY ON-STREET RATES



June 2017

### PROPOSED RATES

- \$1.00 to \$1.00
- \$1.50 to \$2.00
- ▲ \$2.25 to \$2.00
- \$2.00 to \$2.00
- \$2.25 to \$3.00
- ▲ \$3.00 to \$3.00
- \$2.00 to \$3.00
- \$3.00 to \$4.00
- \$4.00 to \$5.00

# Hour of Operation Changes

## Proposed Paid Parking End Time to 9:00p.m., Monday to Sunday

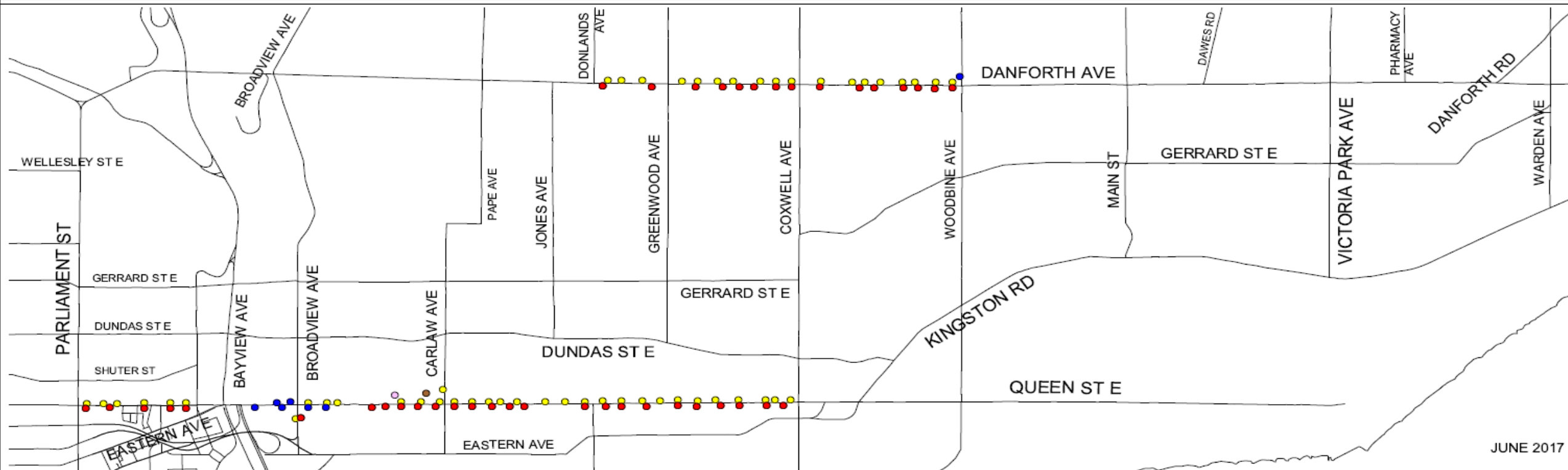
- College St., between Brock Ave. and Ossington Ave.
- Danforth Ave., between Donlands Ave. and Woodbine Ave.
- Dundas St. W., between Indian Grove and Runnymede Rd.
- Queen St. E., between Bayview Ave. and Coxwell Ave.
- Queen St. E., between Parliament St. and River St.

APPENDIX 2: Proposed Hour of Operation Changes

From	To	From	Hours of Operation	To
TPA-26	TPA-1	Mon. - Sat. 8:00 a.m. to 6:00 p.m.	Mon. - Sat. 8:00 a.m. to 9:00 p.m. Sun. 1:00 p.m. to 9:00 p.m.	
TPA-78	TPA-13	Mon. - Fri. 8:00 a.m. to 3:30 p.m. No Parking: 3:30 p.m. to 6:30 p.m. Sat. 8:00 a.m. to 6:00 p.m.	Mon. - Fri. 8:00 a.m. to 3:30 p.m., 6:30 p.m. to 9:00 p.m. No Parking: 3:30 p.m. to 6:30 p.m. Sat. 8:00 a.m. to 9:00 p.m. Sun. 1:00 p.m. to 9:00 p.m.	
TPA-21	TPA-15	Mon. - Fri. 9:00 a.m. to 8:00 p.m. No Parking: 7:00 a.m. to 9:00 a.m. Sat. 8:00 a.m. to 6:00 p.m.	Mon. - Fri. 9:00 a.m. to 9:00 p.m. No Parking: 7:00 a.m. to 9:00 a.m. Sat. 8:00 a.m. to 9:00 p.m. Sun. 1:00 p.m. to 9:00 p.m.	
TPA-59	TPA-15	Mon. - Sat. 9:00 a.m. to 6:00 p.m. No Parking: 7:00 a.m. to 9:00 a.m. Sun. 1:00 p.m. to 6:00 p.m.	Mon. - Fri. 9:00 a.m. to 9:00 p.m. No Parking: 7:00 a.m. to 9:00 a.m. Sat. 8:00 a.m. to 9:00 p.m. Sun. 1:00 p.m. to 9:00 p.m.	
TPA-69	TPA-17	Mon. - Sat. 10:00 a.m. to 6:00 p.m.	Mon. - Sat. 10:00 a.m. to 9:00 p.m. Sun. 1:00 p.m. to 9:00 p.m.	
TPA-79	TPA-37	Mon. - Fri. 10:00 a.m. to 6:00 p.m. No Parking: 7:00 a.m. to 10:00 a.m. Sat. 8:00 a.m. to 6:00 p.m.	Mon. - Fri. 10:00 a.m. to 9:00 p.m. No Parking: 7:00 a.m. to 10:00 a.m. Sat. 8:00 a.m. to 9:00 p.m. Sun. 1:00 p.m. to 9:00 p.m.	
TPA-20	TPA-6	Mon. - Fri. 6:00 a.m. to 4:00 p.m. No Parking: 7:00 a.m. to 9:00 a.m., 4:00 p.m. to 6:00 p.m. Sat. 8:00 a.m. to 6:00 p.m.	Mon. - Fri. 9:00 a.m. to 4:00 p.m., 6:00 p.m. to 9:00 p.m. No Parking: 7:00 a.m. to 9:00 a.m., 4:00 p.m. to 6:00 p.m. Sat. 8:00 a.m. to 9:00 p.m. Sun. 1:00 p.m. to 9:00 p.m.	
TPA-46	TPA-7	Mon. - Fri. 8:00 a.m. to 4:00 p.m. No Parking: 4:00 p.m. to 6:00 p.m. Sat. 8:00 a.m. to 6:00 p.m.	Mon. - Fri. 8:00 a.m. to 4:00 p.m., 6:00 p.m. to 9:00 p.m. No Parking: 4:00 p.m. to 6:00 p.m. Sat. 8:00 a.m. to 9:00 p.m. Sun. 1:00 p.m. to 9:00 p.m.	

MAP 2 - 2017 PROPOSED ON-STREET HOUR OF OPERATION CHANGES

# Map 2



# Changes by Neighbourhood Improvement Areas (NIAs)

Rate Change by Area		
Neighbourhood Improvement Area	\$1.50 to \$2.00	\$2.25 to \$3.00
Beechborough-Greenbrook	✓	
Flemingdon Park	✓	
Keelesdale-Eglinton West	✓	
Mount Dennis	✓	
Oak Ridge	✓	
Regent Park	✓	
South Parkdale		✓
Taylor-Massey	✓	
Weston	✓	
Weston-Pellam Park	✓	

- **10 NIAs** impacted by proposed rate changes:
  - 9 NIAs are proposed to increase from \$1.50 to \$2.00
  - 1 NIA, South Parkdale (streets in Liberty Village area) is proposed to increase from \$2.25 to \$3.00
- **1 NIA** (Regent Park) impacted by hours of operation changes:
  - Queen St. E. from Parliament St. to River St.

# Next Steps

- Proposed BIA Engagement:
  - Letter re: Proposed Change per BIA
  - Comments & Feedback
  - BIA Meetings in July & August
- Staff Report to City Council:
  - GMC Agenda Closing for **September 11<sup>th</sup>, 2017**
  - GMC Meeting on **September 25<sup>th</sup>, 2017**
  - Toronto City Council **October 2<sup>nd</sup>, 2017**
- If approved, Implementation **Fall-Winter 2017 & Spring 2018**

# Contact Information

- Ian Maher, Vice President of Strategic Planning
  - [Ian.Maher@Toronto.ca](mailto:Ian.Maher@Toronto.ca)
  - 416-393-7291
- Ann Marie Chung, Sr. Policy & Planning Analyst
  - [AnnMarie.Chung@Toronto.ca](mailto:AnnMarie.Chung@Toronto.ca)
  - 416-393-7289

\*Email Preferred.